

Petrol Management Systems

System Tool

Communication Test:

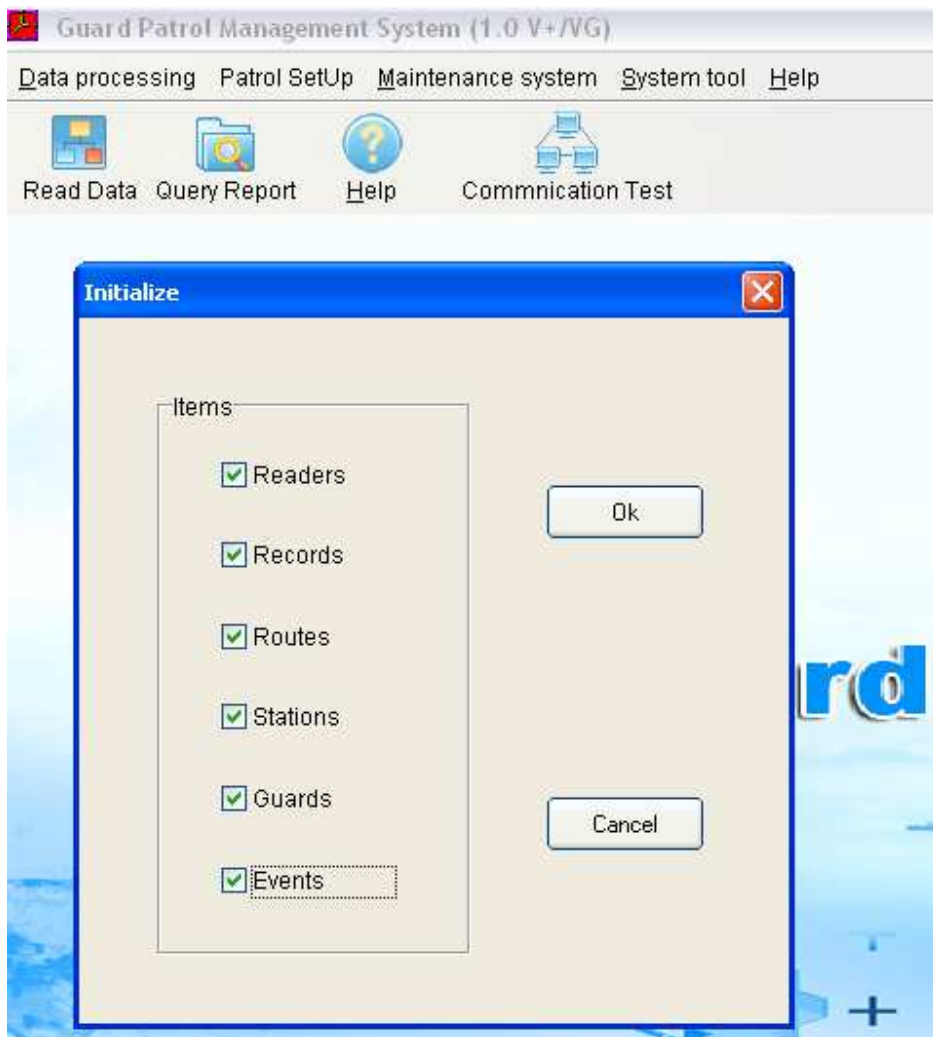
Communication Test is to check the connection between Reader & PC

Connect the reader to the PC via USB & Click on Read ID.If Reader is communicating it will show reader ID that you can modified (Not necessary) otherwise it will give Error of Reading ID



Initialize:

Initialize will clear all data from the Reader
(Reader will be Reset)

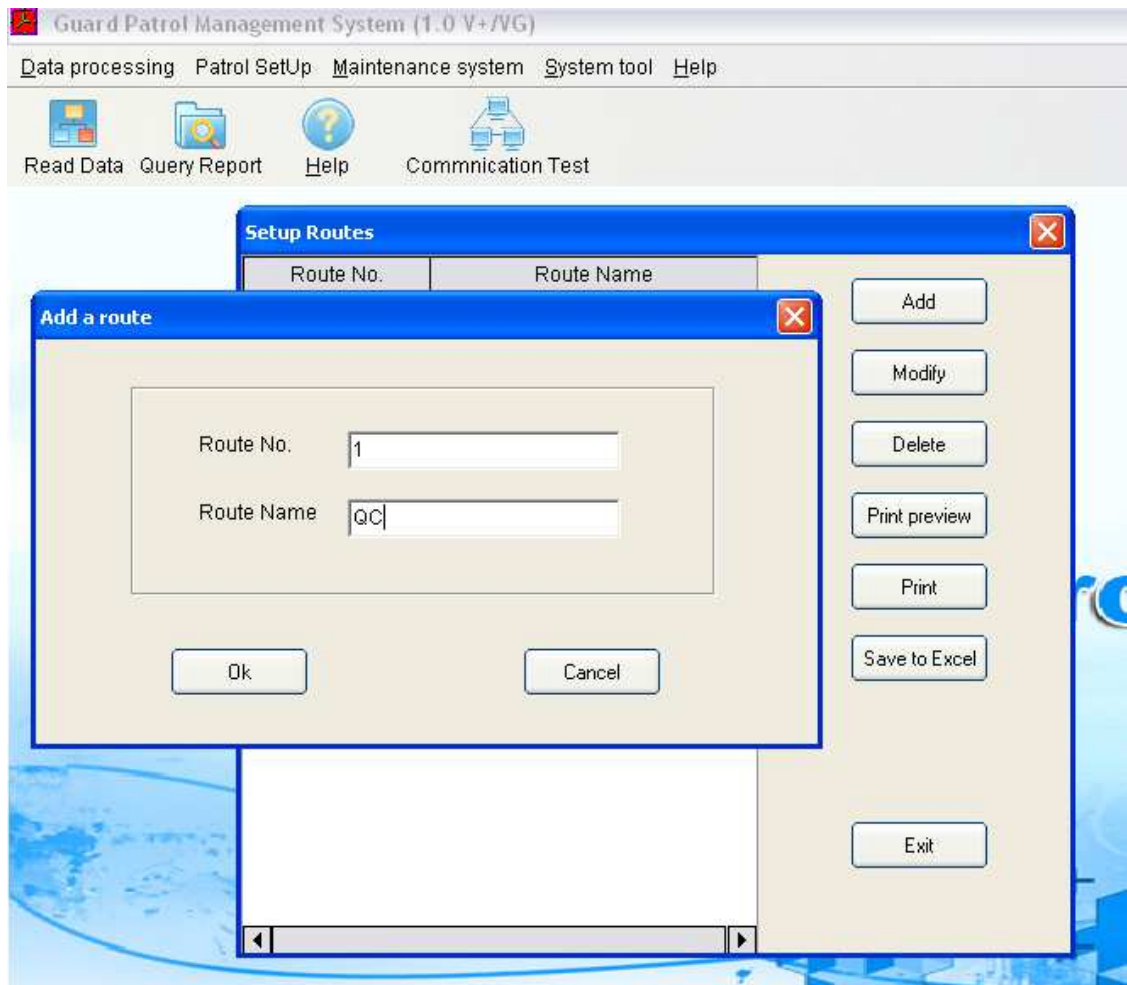


When the system is operated for the first time, or a reader is used on the system for the first time, it is recommended using it, in order to eliminate all useless records.

Petrol Setup

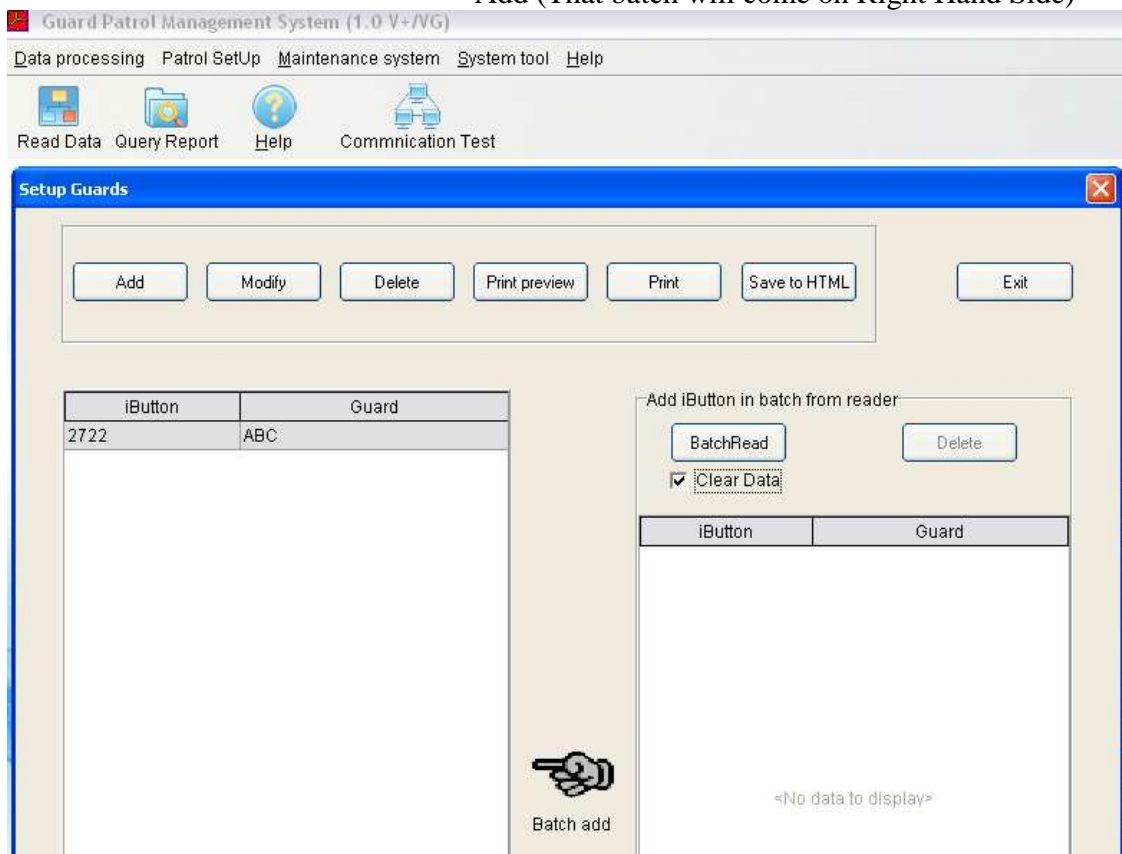
Setup Route:

In this you can setup the Route Number & Route Name



Setup Guard:

In this you can set the Batch for Each Guard
For this first clear all the back from the reader
By clicking on Batch Read then Select All &
Delete (While clicking on Batch read Clear data
has to selected)
Then Show the Batch & Click on batch Read &
then write down the Guard Name then click Batch
Add (That batch will come on Right Hand Side)

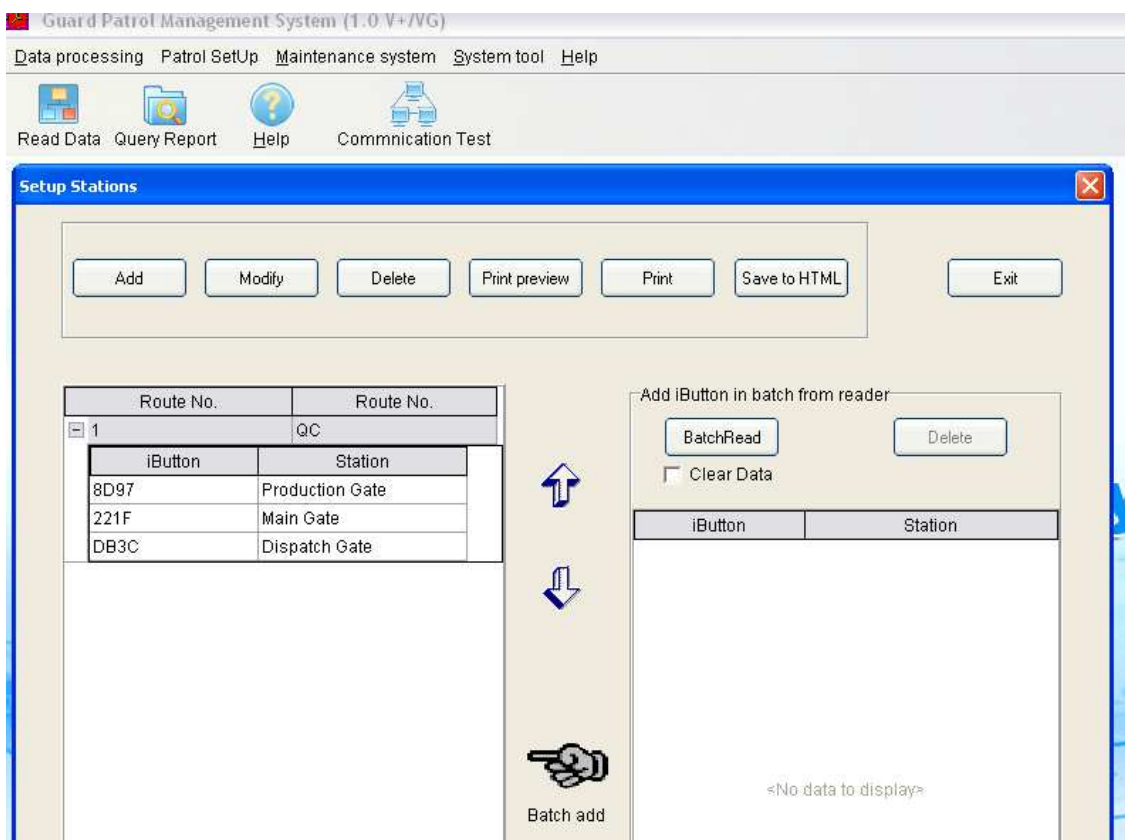


Setup Station:

In this you can set the Batches for each Station (You can say Gate)

How to Do

Show station Tag then read the Batch & write Down the Station Name here as well as on the Batch to Identify then click on Batch Add

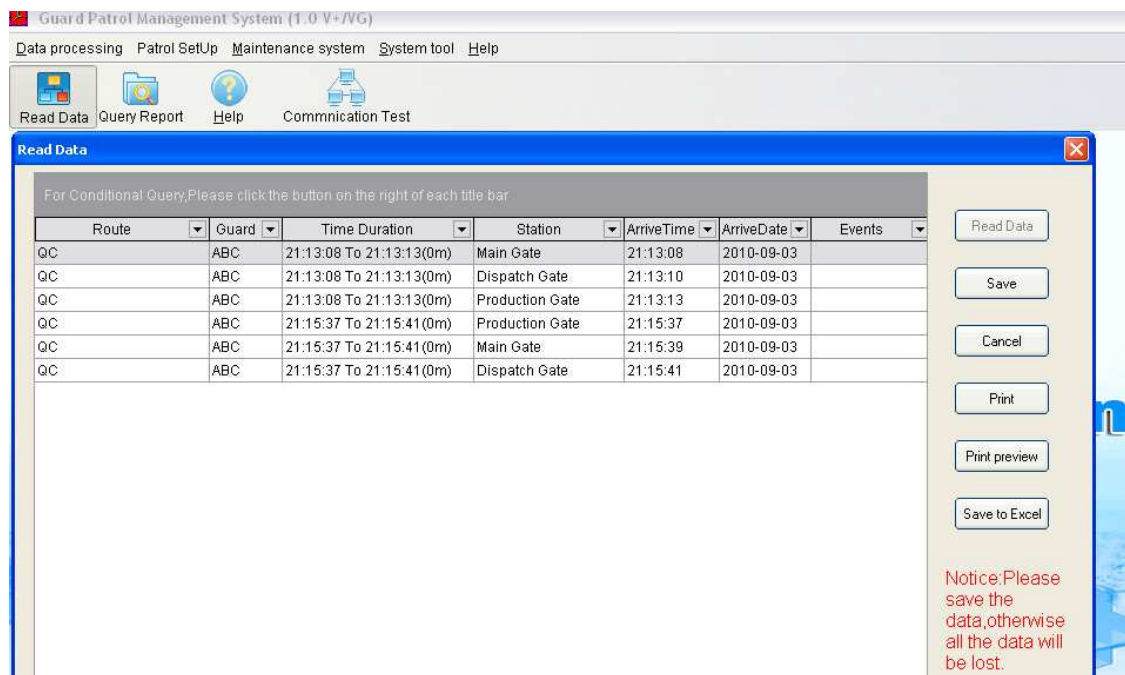


Read Data

Read Data:

Read Data will download the Transaction Data From the Reader. Once you Read the Data, you should Save it otherwise it will not be store in the Database & Data will be lost

Note: Once You Read the Data the data will get cleared from the reader so it is mandatory to save the Data



Guard Patrol Management System (1.0 V+/VG)

Data processing Patrol SetUp Maintenance system System tool Help

Read Data Query Report Help Communication Test

Read Data

For Conditional Query, Please click the button on the right of each title bar

Route	Guard	Time Duration	Station	ArriveTime	ArriveDate	Events
QC	ABC	21:13:08 To 21:13:13(0m)	Main Gate	21:13:08	2010-09-03	
QC	ABC	21:13:08 To 21:13:13(0m)	Dispatch Gate	21:13:10	2010-09-03	
QC	ABC	21:13:08 To 21:13:13(0m)	Production Gate	21:13:13	2010-09-03	
QC	ABC	21:15:37 To 21:15:41(0m)	Production Gate	21:15:37	2010-09-03	
QC	ABC	21:15:37 To 21:15:41(0m)	Main Gate	21:15:39	2010-09-03	
QC	ABC	21:15:37 To 21:15:41(0m)	Dispatch Gate	21:15:41	2010-09-03	

Read Data

Save

Cancel

Print

Print preview

Save to Excel

Notice: Please save the data, otherwise all the data will be lost.

Query Report:

This menu is to view the data periodically

Guard Patrol Management System (1.0 V+/VG)

Data processing Patrol SetUp Maintenance system System tool Help

Read Data Query Report Help Communication Test

Patrolling Status Report

Condition

Start Date: 03/09/2010 12:00:00 AM

End Date: 03/09/2010 11:59:59 PM

Buttons: Query, Save to Excel, Print preview, Print, Exit

For Conditional Query, Please click the button on the right of each title bar

Patrolling Status Report From 03/09/2010 To 03/09/2010						
Route	Guard	Time Duration	Station	ArriveTime	ArriveDate	Events
			Main Gate	21:13:08	2010-09-03	
			Production Gate	21:13:13	2010-09-03	
	ABC	21:15:37 To 21:15:41 (0m)	Production Gate	21:15:37	2010-09-03	
			Main Gate	21:15:39	2010-09-03	
			Dispatch Gate	21:15:41	2010-09-03	